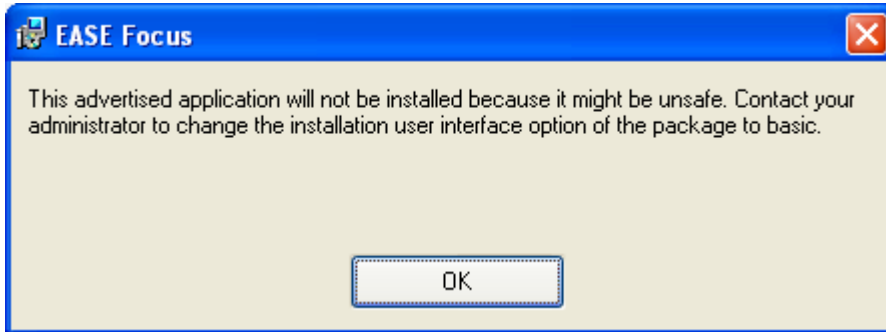


If you are encountering the following error message when trying to install EASE Focus:



Please follow this suggestion:

This error can occur when a previous EASE Focus installation was not removed from the computer entirely.

You can use the Windows Installer CleanUp Utility to fix the problem:

Download Windows Installer CleanUp Utility from

<http://www.softpedia.com/get/Security/Secure-cleaning/Windows-Installer-CleanUp-Utility.shtml>

Install the CleanUp Tool, run it, select from the list "EASE Focus" and execute "Remove".

Then try to install EASE Focus once more.